

This website will disappear soon. Visit our new corporate website at [www.associated-weavers.com](http://www.associated-weavers.com) for the latest information and updates.

Don't forget to update your bookmarks!

## CALIFORNIA DREAMS NEW 26



### Product properties

Widths (m)	4.00/5.00	Backing	Flextex Plus Actionbac
Texture	Cut & loop	Pile composition	100% Polyamide (Nylon)
Aspect	Structured/dessin	Pattern repeating every L*W (cm)	
Domestic Use	intensive : bedroom, guest room, living, dining, hobby, office, study, entrance, hallway and stairs *	Commercial Use	-
(*) if stairs symbol is present			
Pile height (mm)	12.0	Total thickness (mm)	14.0
Budget	€€€		



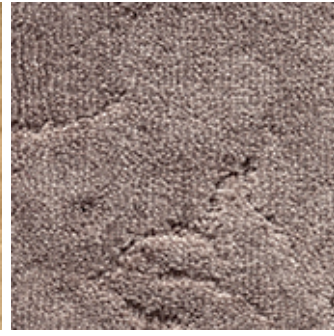
## Available colors



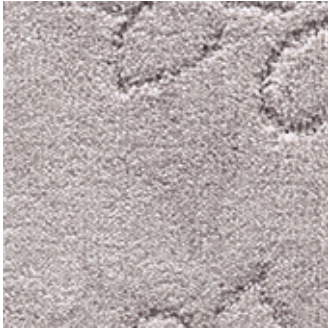
CALIFORNIA  
DREAMS NEW 03



CALIFORNIA  
DREAMS NEW 36



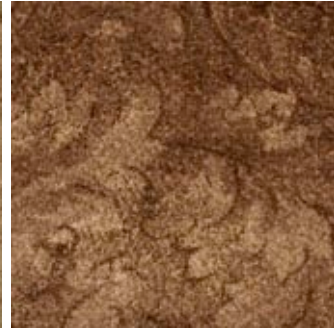
CALIFORNIA  
DREAMS NEW 49



CALIFORNIA  
DREAMS NEW 90



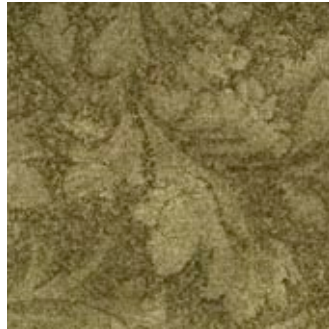
CALIFORNIA  
DREAMS NEW 39



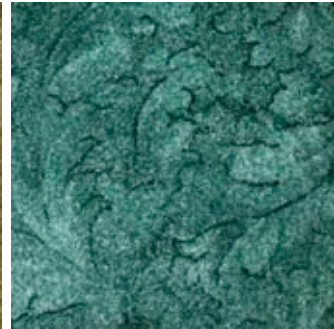
CALIFORNIA  
DREAMS NEW 40



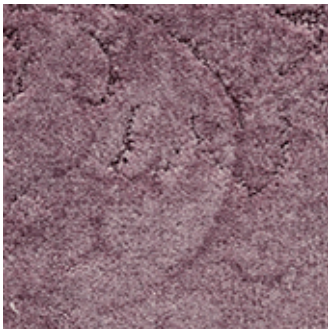
CALIFORNIA  
DREAMS NEW 94



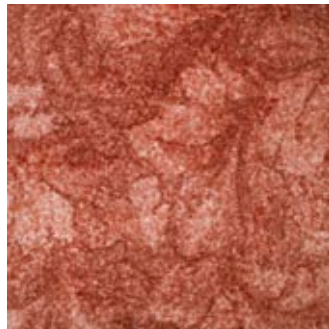
CALIFORNIA  
DREAMS NEW 26



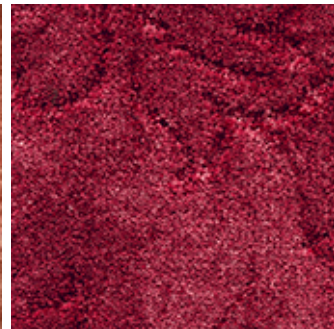
CALIFORNIA  
DREAMS NEW 29



CALIFORNIA  
DREAMS NEW 67



CALIFORNIA  
DREAMS NEW 88



CALIFORNIA  
DREAMS NEW 10

---

AWE -IZ "Klein Frankrijk", Weverijstraat 1 - 9600 Ronse Belgium - Tel + 32 55 23 02 11 -

[www.carpetyourlife.com](http://www.carpetyourlife.com)

*The Associated Weavers Company reserves the right to modify the characteristics of products while keeping the same technical properties. We strongly recommend the use of darker colours for heavy traffic areas. - This document may contain typographical errors. The product images used are a general guide and, in reality, the colours may deviate slightly due to limitations of the printing process used.*