

This website will disappear soon. Visit our new corporate website at [www.associated-weavers.com](http://www.associated-weavers.com) for the latest information and updates.

Don't forget to update your bookmarks!

## MAXIMA 40

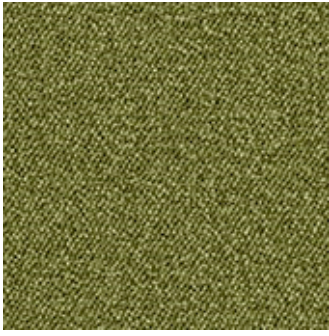


### Product properties

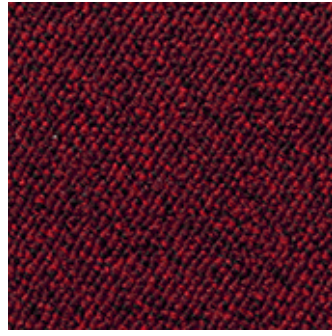
Widths (m)	4.00/5.00	Backing	Flextex Plus Actionbac
Texture	Loop pile	Pile composition	Solution Dyed Nylon (SDN)
Aspect	Structured/dessin	Pattern repeating every L*W (cm)	
Domestic Use	-	Commercial Use	Intensive : Hotel room, Hotel suite, Boutique, Shop, Restaurant, Conference room, High traffic office, Reception, Stairs
(*) if stairs symbol is present			
Pile height (mm)	2.9	Total thickness (mm)	5.3
Budget	€€		



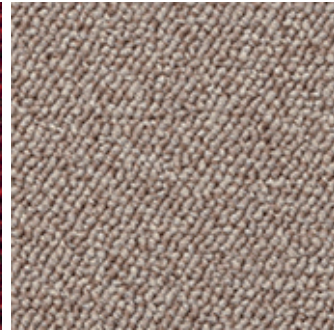
## Available colors



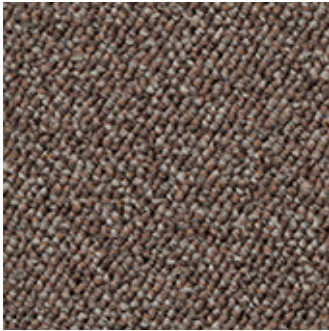
MAXIMA 21



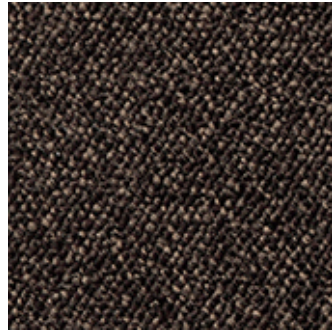
MAXIMA 12



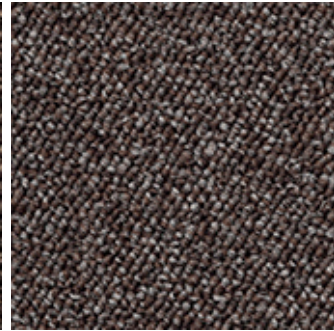
MAXIMA 33



MAXIMA 37



MAXIMA 45



MAXIMA 40

---

AWE -IZ "Klein Frankrijk", Weverijstraat 1 - 9600 Ronse Belgium - Tel + 32 55 23 02 11 -

[www.carpetyourlife.com](http://www.carpetyourlife.com)

*The Associated Weavers Company reserves the right to modify the characteristics of products while keeping the same technical properties. We strongly recommend the use of darker colours for heavy traffic areas. - This document may contain typographical errors. The product images used are a general guide and, in reality, the colours may deviate slightly due to limitations of the printing process used.*