

This website will disappear soon. Visit our new corporate website at www.associated-weavers.com for the latest information and updates.

Don't forget to update your bookmarks!

PERFORMA 70

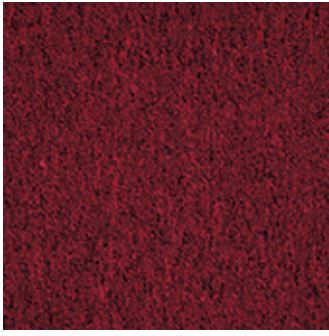


Product properties

| | | | |
|---------------------------------|----------------------|----------------------------------|--|
| Widths (m) | 4.00/5.00 | Backing | Flextex Plus Actionbac |
| Texture | Loop pile | Pile composition | Solution Dyed Nylon (SDN) |
| Aspect | Plain color/speckled | Pattern repeating every L*W (cm) | |
| Domestic Use | - | Commercial Use | Intensive : Hotel room, Hotel suite, Boutique, Shop, Restaurant, Conference room, High traffic office, Reception, Stairs |
| (*) if stairs symbol is present | | | |
| Pile height (mm) | 2.7 | Total thickness (mm) | 5.2 |
| Budget | €€ | | |



Available colors



PERFORMA 11



PERFORMA 21



PERFORMA 33



PERFORMA 40



PERFORMA 43



PERFORMA 70



PERFORMA 77



PERFORMA 84



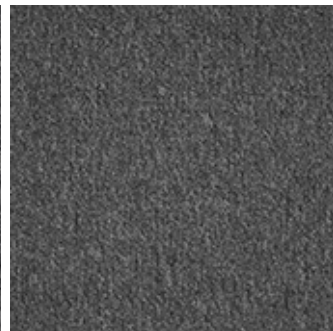
PERFORMA 90



PERFORMA 94



PERFORMA 98



PERFORMA 99

AWE -IZ "Klein Frankrijk", Weverijstraat 1 - 9600 Ronse Belgium - Tel + 32 55 23 02 11 -

www.carpetyourlife.com

The Associated Weavers Company reserves the right to modify the characteristics of products while keeping the same technical properties. We strongly recommend the use of darker colours for heavy traffic areas. - This document may contain typographical errors. The product images used are a general guide and, in reality, the colours may deviate slightly due to limitations of the printing process used.